



2022

Driver Configuration Software
User Manual

V2.0

1.Introduction	1
1.1 Software Introduction.....	1
1.2 Operating System Requirements	1
1.3 Software installation and startup.....	1
1.4 Programmer Hardware Wring Connection.....	2
2. Software Function.....	3
2.1 User	4
2.1.1 User login	4
2.1.2 Change password.....	4
2.1.3 Exit Login.....	4
2.2 Port Configuration	5
2.3 Read Write Parameters	5
2.4 Firmware Upgrade.....	10
2.5 About	10
3. Annex A	11
3.1 Modification record	11

1.Introduction

1. Software Introduction

Bridgelux Vesta Fusion and Pallas-A drivers can be programmed through “Bridgelux Driver Configuration”. It allows users to configure the output current, minimum dimming ratio, dimming-to-off mode, and dimming voltage (Vesta Fusion also includes controls of dimming curve, dimming mode, fade time, CCT value, etc.)

2. Operating System Requirements

Operating System: Windows 7 Service Pack 1 or higher

Software Environment: .NET Framework 4.8 Programming

Tool: Bridgelux Driver Configuration V2.0.220218.zip

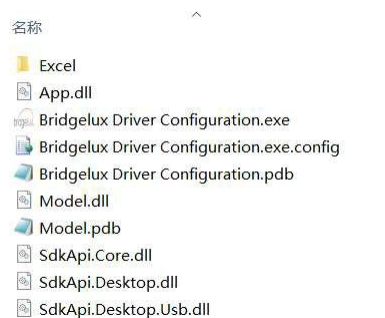
Note:

1. .NET Framework 4.8 must be installed.

Download link: <https://dotnet.microsoft.com/download>

2. If your computer cannot automatically install the required driver program, please search for “CH340E Driver” on the internet to download and install the driver.

1.3 Software installation and startup



“Bridgelux Driver Configuration” folder is free-install software.

Just unzip the “Bridgelux Driver Configuration V2.0.220218.zip” to your local drive, and then, double click “Bridgelux Driver Configuration.exe” to start the software.

1.4 Programmer Hardware Wring Connection

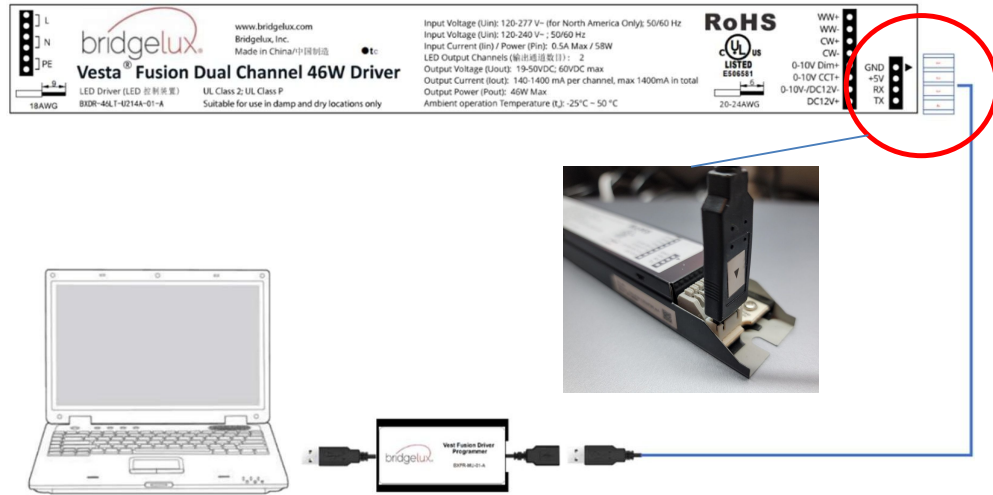


Figure 1 Programming connection diagram and connector orientation



Figure 2 Vest Fusion Driver Programmer

The USB male connector of Vest Fusion Driver Programmer is connected to the computer, the USB female connector is connected to the USB male to 2.54mm cable, and the 2.54mm terminal is connected to the driver. see figure 1.

2. Software Function

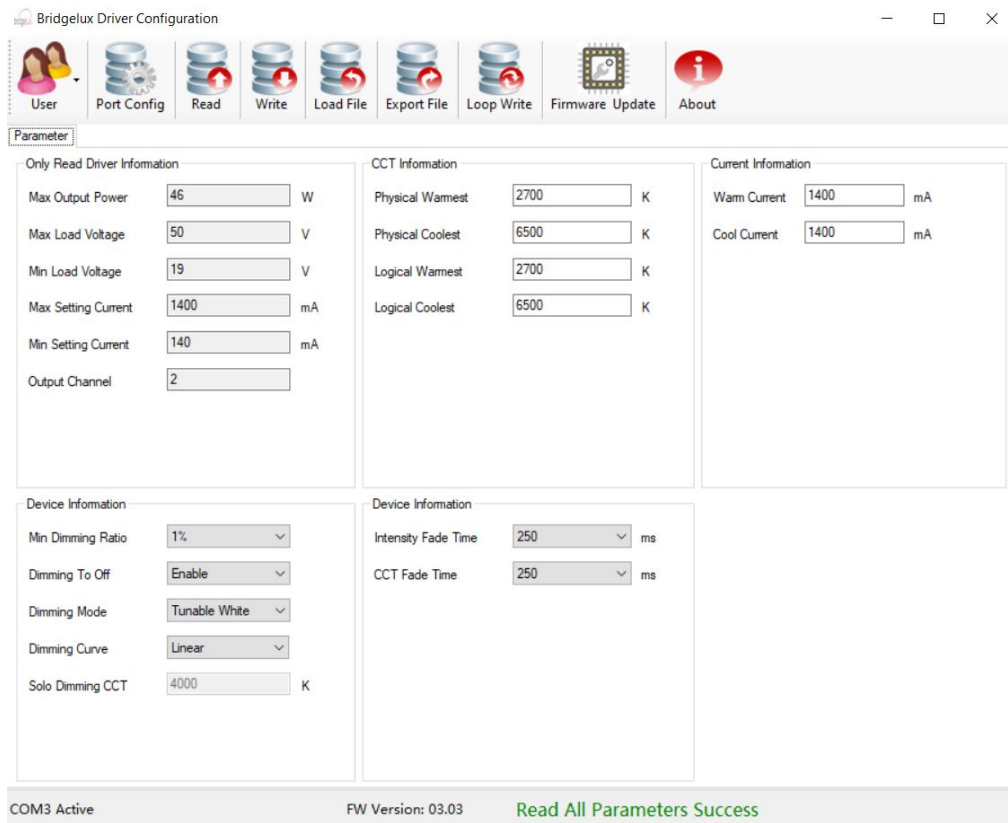


Figure 3

Bridgelux Driver Configuration Software UI include:

Title bar: Displays the software name.

Operating area: All operation buttons, including user menu, serial port configuration, read parameter, write parameter, load parameter file, export parameter file, loop write parameter, firmware upgrade, about software.

Parameter display area: Displays and edits parameter information.

Status bar: Displays serial port, firmware version, operation prompt information.

1. User

1. User login



Figure 4

1. Click User -> login.
 2. Input "password" and then click "login".
- Note: Default password "adp12346".

2.1.2 Change password

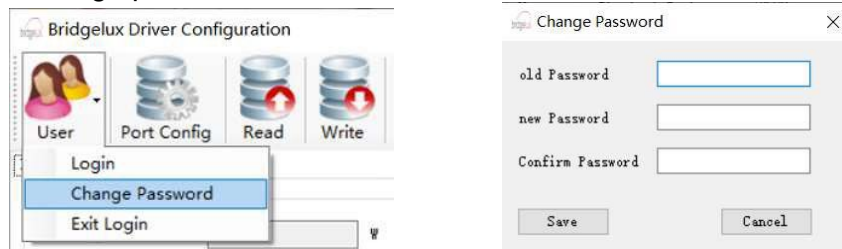


Figure 5

1. Click User->Change Password.
2. Input old password, new password and confirm password then click "Save".

2.1.3 Exit Login

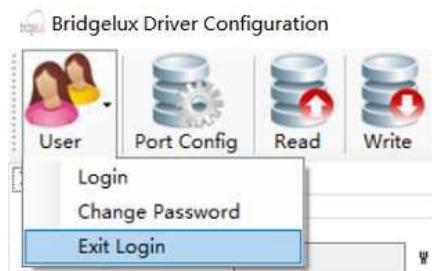


Figure 6

Click User-> Exit login, Exits the engineer permission.

2.2 Port Configuration

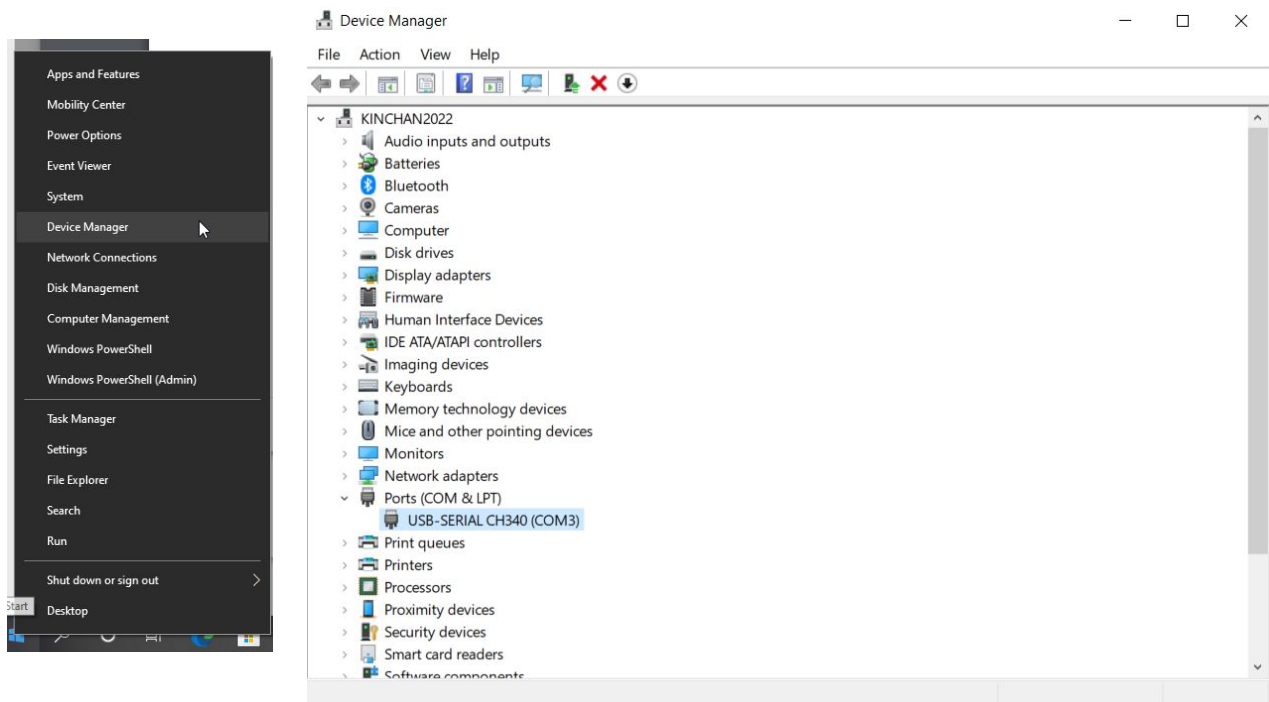


Figure 7

1. Click “Port Config”.
2. Select programmer serial port, baud rate 19200 and then click “OK”.

After plug the Bridgelux programming cable to one of the USB port on your PC. We have to find out which COM port has been assigned to this programming cable

1. Right click on “Windows” icon (at the bottom left corner)
2. click on “Device Manager”
3. From the pop-up window, scroll down to “Ports (COM & LPT)”, you should find the “USB-SERIAL CH340 (COM X)”. Write down the COM port number as you will need it when you use the Bridgelux Configuration APP in next step.
 - For example, this PC assigned the USB-SERIAL CH340 to COM 3 (your PC may assign different COM port for your case)



2.3 Read Write Parameters

2.3a Vesta Fusion (Dual Channel Driver)

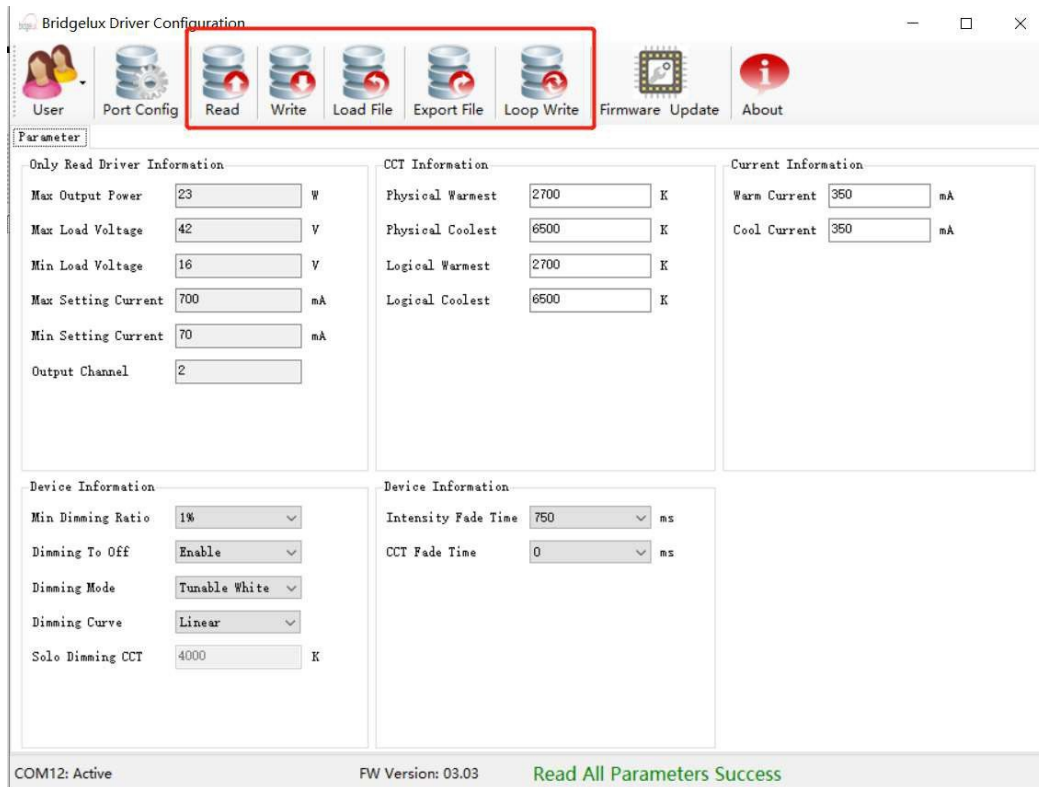


Figure 8

1. Click Read button. Read all parameters.
2. Click Write button. Write all parameters to driver.
3. Click Export File button. Export all parameter to file.
4. Click Load File button. Load external parameter file.
5. Click Loop Write button. Write all parameters to driver every 2.5s.

Only Read Driver Information	
Max Output Power	Maximum output power of the driver
Max Load Voltage	Maximum load voltage of the driver
Min Load Voltage	Minimum load voltage of the driver
Max Setting Current	Maximum settable current of the driver
Min Setting Current	Minimum settable current of the driver
Output Channel	Number of drive output channels
CCT Information	
Physical Warmest	Configuration physical warmest and coolest color temperature range. The valid range 1500K-7000K, and the color temperature should be the same as that of the lamp.
Physical Coolest	
Logical Warmest	Configuration logical warmest and coolest color temperature range. The logical color temperature range should be within the physical color temperature range.
Logical Coolest	
Current Information	
Warm Current	output current of Warm color channel.
Cool Current	output current of Cool color channel.
Device Information	
Min Dimming Ratio	Minimum dimming ratio, 1% 5% 10% is optional.
Dimming To Off	Enable or disable dimming to OFF
Dimming Mode	Configuration Dimming Mode. Solo dimming: use "0-10V Dim+" voltage control the intensity of both channels simultaneously. Warm dimming: use "0-10V Dim+" voltage control both intensity and color temperature simultaneously. Tunable white: use "0-10V Dim+" voltage control intensity and "0-10V CCT+" voltage control color temperature. Flex: use "0-10v Dim+" + "0-10V CCT+" voltage control intensity. "0-10V Dim+" / ("0-10V Dim+" + "0-10V CCT+") voltage control color temperature. Dual Dimming: use "0-10V Dim+" voltage control warm channel intensity, "0-10V CCT+" voltage control cool channel intensity.
Dimming Curve	dimming curve, "logarithmic", "linear", "square" is optional
Solo Dimming CCT	CCT when the dimming mode is at Solo Dimming
Intensity Fade Time	Configuration fade time of intensity changing, the fade time of the driver intensity from A to B. 0ms,250ms,500ms,750ms,1000ms,1250ms,1500ms is optional.
CCT Fade Time	Configuration fade time of CCT changing, the fade time of the driver CCT from A to B. 0ms, 250ms, 500ms, 750ms, 1000ms, 1250ms, 1500ms is optional.

2.3 Read Write Parameters

2.3b Pallas-A (Single Channel Driver)

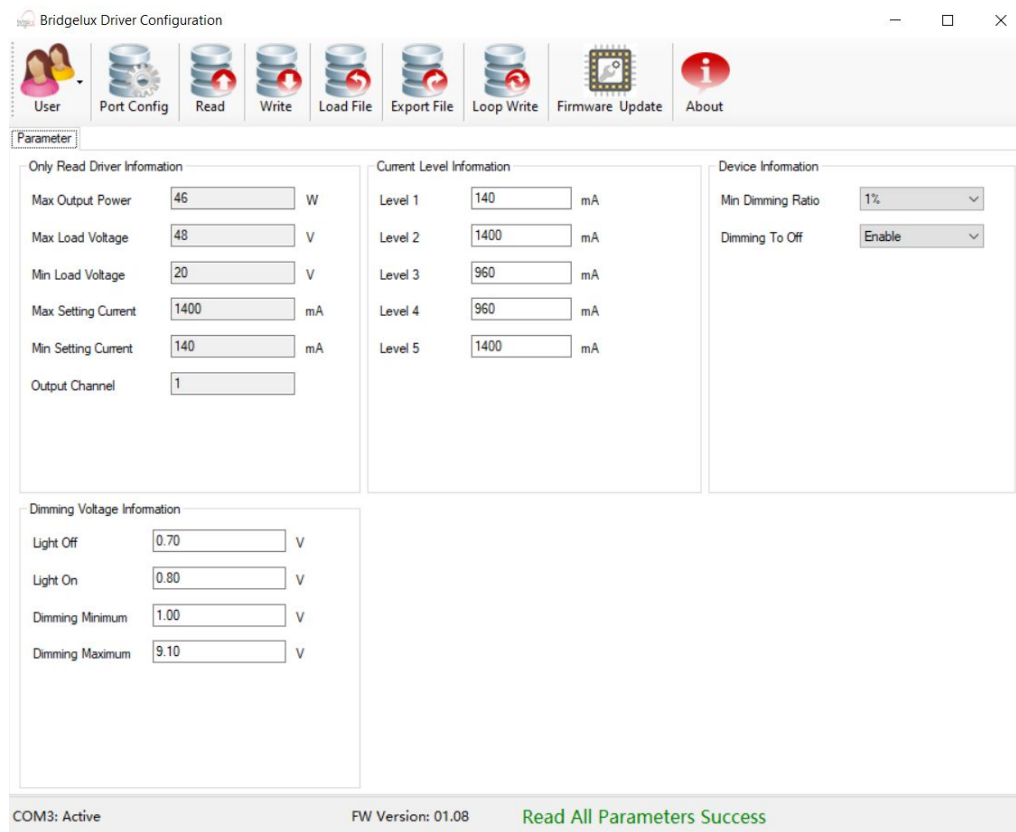


Figure 9

1. Click Read button. Read all parameters.
2. Click Write button. Write all parameters to driver.
3. Click Export File button. Export all parameter to file.
4. Click Load File button. Load external parameter file.
5. Click Loop Write button. Write all parameters to driver every 2.5s.

Only Read Driver Information	
Max Output Power	Maximum output power of the driver
Max Load Voltage	Maximum load voltage of the driver
Min Load Voltage	Minimum load voltage of the driver
Max Setting Current	Maximum settable current of the driver
Min Setting Current	Minimum settable current of the driver
Output Channel	Number of drive output channels
Current Information	
Level 1 – Level 4	Reserved for Bridgelux R&D use only
Level 5	output current setting
Device Information	
Min Dimming Ratio	Minimum dimming ratio, 1% 5% 10% is optional.
Dimming To Off	Enable or disable dimming to OFF
Dimming Voltage Information	
Light off	Configuration dimming off voltage.
Light on	Configuration dimming on voltage.
Dimming Minimum	Configuration dimming minimum voltage.
Dimming Maximum	Configuration dimming maximum voltage.

2.4 Firmware Upgrade

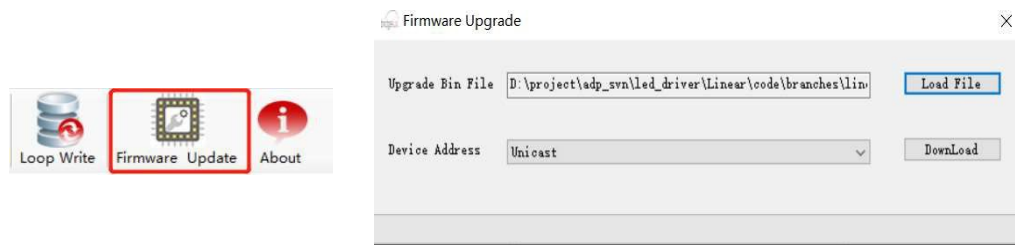


Figure 10

1. Click Firmware Update button, open firmware upgrade UI.
 2. Click Load File button on the firmware upgrade UI, Load Upgrade Bin File.
 3. Select device address “Unicast” or “broadcast” and then click download button.
- Note: Firmware upgrade is not supported, and will be extended in the future.

2.5 About



Figure 11

Click About button, open software information UI. see figure 11

