

# Bridgelux® Gen 7 V18 Thrive™ Array

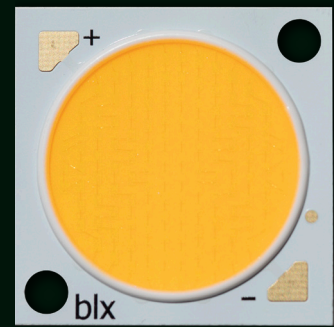
Product Data Sheet DS322



BXRE-27S | 30S | 35S | 40S | 50S | 57S | 65S

# Introduction

V18 Thrive



Bridgelux Thrive™ combines unique chip, phosphor and packaging technology to closely match the spectra of natural light over the visible wavelength range. Thrive can be used in constant color point luminaires to bring full spectrum natural light indoors or in tunable white luminaires to incorporate circadian elements that may impact human well-being. The high fidelity spectral output of Thrive creates stunning environments with excellent color rendering and outstanding TM30 metrics. Thrive is available in both SMD components and LED arrays to enable a broad range of lighting applications including retail, hospitality, office, education, architectural, museums, healthcare and residential lighting.

## Features

- Engineered spectrum to closely match natural light
- CRI >95, R1-R15 >90, high Rf and Rg values
- High efficacy full spectrum solution
- No violet chip augmentation
- Hot color targeted
- Form factor consistent with existing Bridgelux COB arrays
- Broad product platform availability (SMDs and COBs)

## Benefits

- Full consistent spectrum with fewer spectral spikes
- Natural and vivid color rendering
- Greater energy savings, lower utility costs
- Economical, high efficiency solution
- Uniform and consistent white light at application conditions
- Ease of design and rapid go-to-market
- Enables greater design flexibility and platform color consistency

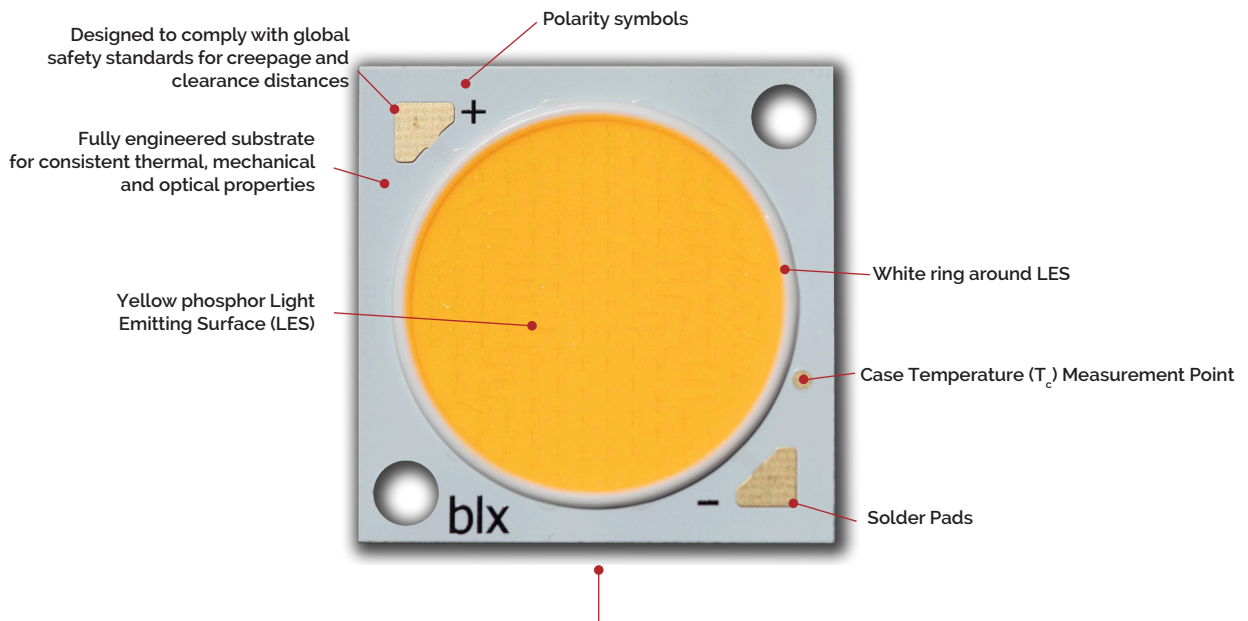


# Contents

Product Feature Map	2
Product Nomenclature	2
Product Selection Guide	3
Spectrum Characteristics	5
Electrical Characteristics	8
Absolute Maximum Ratings	9
Eye Safety	10
Product Bin Definitions	11
Performance Curves	12
Typical Radiation Pattern	13
Mechanical Dimensions	14
Packaging and Labeling	15
Design Resources	17
Precautions	17
Disclaimers	17
About Bridgelux	18

# Product Feature Map

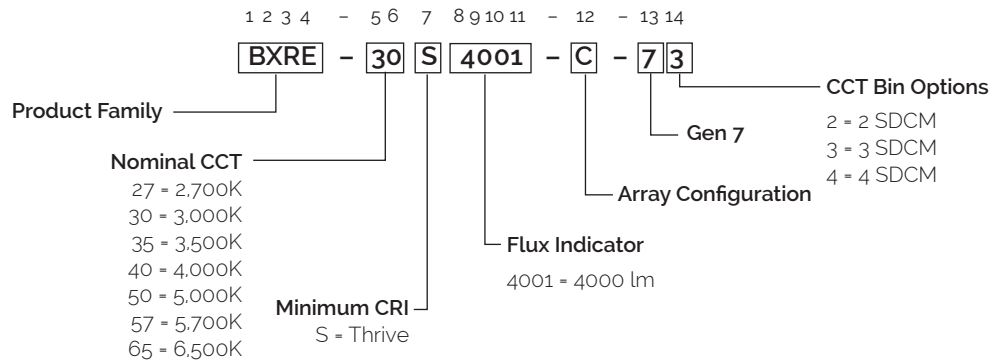
Bridgelux arrays are fully engineered devices that provide consistent thermal and optical performance on an engineered mechanical platform. The V Series arrays are the most compact chip-on-board devices across all of Bridgelux's LED Array products. The arrays incorporate several features to simplify design integration and assembly. Please visit [www.bridgelux.com](http://www.bridgelux.com) for more information on the V Series family of products.



Note: Part number and lot codes are scribed on back of array

## Product Nomenclature

The part number designation for Bridgelux COB arrays is explained as follows:



# Product Selection Guide

The following product configurations are available:

**Table 1:** Selection Guide, Pulsed Measurement Data ( $T_c = 25^\circ\text{C}$ )

Part Number <sup>1,6</sup>	Nominal CCT <sup>1</sup> (K)	CRI <sup>2</sup>	Nominal Drive Current <sup>3</sup> (mA)	Typical $V_f$ (V)	Typical Pulsed Flux <sup>4,5,6,7</sup> $T_c = 25^\circ\text{C}$ (lm)	Minimum Pulsed Flux <sup>6,7,8</sup> $T_c = 25^\circ\text{C}$ (lm)	Typical Power (W)	Typical Efficacy (lm/W)	Typical Photosynthetic Photon Flux (PPF)	Typical Photon Efficiency ( $\mu\text{mol}/\text{J}$ )
BXRE-27S4001-C-7x	2700	95	1170	34.4	4347	3825	40.2	108	75.85	2.07
BXRE-30S4001-C-7x	3000	95	1170	34.4	4669	4109	40.2	116	79.77	2.16
BXRE-35S4001-C-7x	3500	95	1170	34.4	4890	4303	40.2	121	80.93	2.17
BXRE-40S4001-C-7x	4000	95	1170	34.4	4969	4372	40.2	123	80.88	2.15
BXRE-50S4001-C-7x	5000	95	1170	34.4	5232	4604	40.2	130	85.76	2.26
BXRE-57S4001-C-7x	5700	95	1170	34.4	5312	4675	40.2	132	87.34	2.29
BXRE-65S4001-C-7x	6500	95	1170	34.4	5205	4581	40.2	129	85.58	2.23

**Table 2:** Selection Guide, Stabilized DC Test Performance ( $T_c = 85^\circ\text{C}$ )<sup>4,5,6</sup>

Part Number <sup>1,6</sup>	Nominal CCT <sup>1</sup> (K)	CRI <sup>2</sup>	Nominal Drive Current <sup>3</sup> (mA)	Typical $V_f$ (V)	Typical DC Flux <sup>4,5,6,7</sup> $T_c = 85^\circ\text{C}$ (lm)	Minimum DC Flux <sup>6,7,8,9</sup> $T_c = 85^\circ\text{C}$ (lm)	Typical Power (W)	Typical Efficacy (lm/W)	Typical Photosynthetic Photon Flux (PPF)	Typical Photon Efficiency ( $\mu\text{mol}/\text{J}$ )
BXRE-27S4001-C-7x	2700	95	1170	33.7	3956	3481	39.4	100	69.03	1.92
BXRE-30S4001-C-7x	3000	95	1170	33.7	4249	3739	39.4	108	72.59	2.00
BXRE-35S4001-C-7x	3500	95	1170	33.7	4450	3916	39.4	113	73.64	2.02
BXRE-40S4001-C-7x	4000	95	1170	33.7	4521	3979	39.4	115	73.58	2.00
BXRE-50S4001-C-7x	5000	95	1170	33.7	4761	4190	39.4	121	78.04	2.10
BXRE-57S4001-C-7x	5700	95	1170	33.7	4834	4254	39.4	123	79.48	2.12
BXRE-65S4001-C-7x	6500	95	1170	33.7	4737	4168	39.4	120	77.88	2.07

Notes for Table 1 & 2:

- Product CCT is hot targeted at  $T_j = 85^\circ\text{C}$ . Nominal CCT as defined by ANSI C78.377-2011.
- All CRI values are measured at  $T_j = T_c = 25^\circ\text{C}$ . CRI values are minimums. Bridgelux maintains a  $\pm 3$  tolerance on CRI values.
- Drive current is referred to as nominal drive current.
- Products tested under pulsed condition (10ms pulse width) at nominal test current where  $T_j$  (junction temperature) -  $T_c$  (case temperature) =  $25^\circ\text{C}$ . Typical stabilized DC performance values are provided as reference only and are not a guarantee of performance.
- Typical performance values are provided as a reference only and are not a guarantee of performance.
- Typical performance is estimated based on operation under DC (direct current) with LED array mounted onto a heat sink with thermal interface material and the case temperature maintained at  $85^\circ\text{C}$ . Based on Bridgelux test setup, values may vary depending on the thermal design of the luminaire and/or the exposed environment to which the product is subjected.
- Bridgelux maintains a  $\pm 7\%$  tolerance on flux measurements.
- Minimum flux values at the nominal test current are guaranteed by 100% test.
- Minimum flux values at elevated temperatures are provided for reference only and are not guaranteed by 100% production testing. Based on Bridgelux test setup, values may vary depending on the thermal design of the luminaire and/or the exposed environment to which the product is subjected.

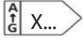
# European Product Registry for Energy Labeling

The European Product Registry for Energy Labeling (EPREL) is defined in the EU Regulation 2017/1369 to provide important energy efficiency information to consumers. Together with Energy Labeling Regulation ELR (EU) 2019/2015 which was amended by regulation (EU) 2021/340 for energy labelling of light sources, manufacturers are required to declare an energy class based on key technical specifications from each of their product and register it in an open data base managed by EPREL. It is now a legal requirement for a vendor of light sources to upload information about their products into the EPREL database before placing these products on the market in the EU.

Table 3 below provides a list of part numbers that are in compliance with ELR and are currently listed in the EPREL database.

At Bridgelux, we are fully committed to supplying products that are compliant with pertinent laws, rules, and obligation imposed by relevant government bodies including the European Energy Labeling regulation. Customers can use these products with full confidence for any projects that fall under the ELR.

**Table 3:** Part numbers registered in European Product Registry for Energy Labeling

PART NUMBER <sup>1</sup>	CCT (K)	CRI	Current <sup>2</sup> (mA)	Vf (V)	Useful flux <sup>3</sup> ( $\Phi_{use}$ ) at 85C (lm)	Power (W)	Efficacy (lm/W)	Energy efficiency class <sup>4</sup> 	Registration No	URL to Product Information Sheet in EPREL Database
BXRE-27S4001-C-73	2700	97	390	31.6	1186	12.3	96	F	869399	<a href="https://eprelec.europa.eu/qr/869399">https://eprelec.europa.eu/qr/869399</a>
BXRE-30S4001-C-73	3000	97	520	32.1	1670	16.7	100	F	869853	<a href="https://eprelec.europa.eu/qr/869853">https://eprelec.europa.eu/qr/869853</a>
BXRE-35S4001-C-73	3500	97	660	32.5	2191	21.5	102	F	870078	<a href="https://eprelec.europa.eu/qr/870078">https://eprelec.europa.eu/qr/870078</a>
BXRE-40S4001-C-73	4000	97	720	32.7	2418	23.5	103	F	870408	<a href="https://eprelec.europa.eu/qr/870408">https://eprelec.europa.eu/qr/870408</a>
BXRE-50S4001-C-73	5000	97	940	33.3	3275	31.3	105	F	870646	<a href="https://eprelec.europa.eu/qr/870646">https://eprelec.europa.eu/qr/870646</a>
BXRE-57S4001-C-73	5700	97	1020	33.5	3590	34.1	105	F	870812	<a href="https://eprelec.europa.eu/qr/870812">https://eprelec.europa.eu/qr/870812</a>
BXRE-65S4001-C-73	6500	97	920	33.2	3193	30.6	104	F	870941	<a href="https://eprelec.europa.eu/qr/870941">https://eprelec.europa.eu/qr/870941</a>

Notes for Table 3:

1. All device listed here must be disposed as e-waste upon its end of life according to local country guideline in each country.
2. For information on performance values at alternative drive conditions, please refer to the Product Selection Guide, Absolute Maximum Rating Table and Performance Curves in this data sheet.
3. For a definition of useful luminous flux ( $\Phi_{use}$ ), please see the ELR regulations at <https://tinyurl.com/4b6zvt4m>.
4. EPREL requires an arrow symbol containing the letter of the energy efficiency class to be displayed, on technical promotional material. Refer to this energy efficiency class column for specific energy efficiency class on each part number.

# Performance at Commonly Used Drive Currents

V Series Thrive LED arrays are tested to the specifications shown using the nominal drive currents in Table 1. V Series Thrive LED Arrays may also be driven at other drive currents dependent on specific application design requirements. The performance at any drive current can be derived from the current vs. voltage characteristics shown in Figure 11 and the flux vs. current characteristics shown in Figure 12. The performance at commonly used drive currents is summarized in Table 4.

**Table 4:** Product Performance at Commonly Used Drive Currents

Part Number	CRI	Drive Current <sup>1</sup> (mA)	Typical $V_f$ $T_c = 25^\circ\text{C}$ (V)	Typical Power $T_c = 25^\circ\text{C}$ (W)	Typical Flux <sup>2</sup> $T_c = 25^\circ\text{C}$ (lm)	Typical DC Flux <sup>3</sup> $T_c = 85^\circ\text{C}$ (lm)	Typical Efficacy $T_c = 25^\circ\text{C}$ (lm/W)
BXRE-27S4001-C-73	95	585	33.2	18.8	2259	2082	120
		780	33.6	26.2	2972	2731	113
		<b>1170</b>	<b>34.4</b>	<b>40.2</b>	<b>4347</b>	<b>3956</b>	<b>108</b>
		1755	35.6	61.8	6269	5627	101
		2340	36.6	83.5	8101	6142	97
BXRE-30S4001-C-73	95	585	33.2	18.8	2426	2237	129
		780	33.6	26.2	3192	2934	122
		<b>1170</b>	<b>34.4</b>	<b>40.2</b>	<b>4669</b>	<b>4249</b>	<b>116</b>
		1755	35.6	61.8	6734	6044	109
		2340	36.6	83.5	8701	6597	104
BXRE-35S4001-C-73	95	585	33.2	18.8	2541	2343	135
		780	33.6	26.2	3343	3073	128
		<b>1170</b>	<b>34.4</b>	<b>40.2</b>	<b>4890</b>	<b>4450</b>	<b>121</b>
		1755	35.6	61.8	7053	6330	114
		2340	36.6	83.5	9113	6909	109
BXRE-40S4001-C-73	95	585	33.2	18.8	2582	2380	137
		780	33.6	26.2	3397	3122	130
		<b>1170</b>	<b>34.4</b>	<b>40.2</b>	<b>4969</b>	<b>4521</b>	<b>123</b>
		1755	35.6	61.8	7166	6432	116
		2340	36.6	83.5	9259	7020	111
BXRE-50S4001-C-73	95	585	33.2	18.8	2719	2506	144
		780	33.6	26.2	3577	3288	136
		<b>1170</b>	<b>34.4</b>	<b>40.2</b>	<b>5232</b>	<b>4761</b>	<b>130</b>
		1755	35.6	61.8	7546	6773	122
		2340	36.6	83.5	9750	7392	117
BXRE-57S4001-C-73	95	585	33.2	18.8	2761	2545	147
		780	33.6	26.2	3632	3338	139
		<b>1170</b>	<b>34.4</b>	<b>40.2</b>	<b>5312</b>	<b>4834</b>	<b>132</b>
		1755	35.6	61.8	7661	6876	124
		2340	36.6	83.5	9899	7505	118
BXRE-65S4001-C-73	95	585	33.2	18.8	2705	2494	144
		780	33.6	26.2	3559	3271	136
		<b>1170</b>	<b>34.4</b>	<b>40.2</b>	<b>5205</b>	<b>4737</b>	<b>129</b>
		1755	35.6	61.8	7507	6738	122
		2340	36.6	83.5	9701	7354	116

Notes for Table 4:

1. Alternate drive currents are provided for reference only and are not a guarantee of performance.
2. Bridgelux maintains a  $\pm 7\%$  tolerance on flux measurements.
3. Typical stabilized DC performance values are provided as reference only and are not a guarantee of performance.

# Spectrum Characteristics

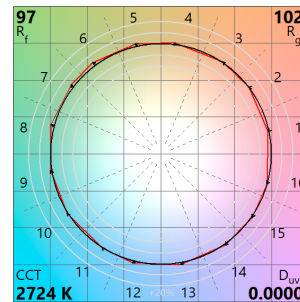
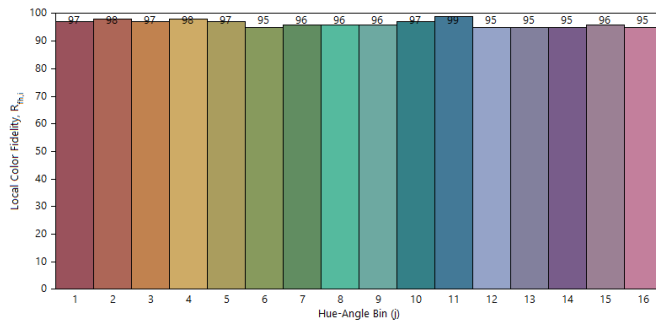
**Table 5:** Typical Color Rendering Index and TM-30 Values at  $T_c=85^\circ\text{C}$

Nominal CCT <sup>1</sup>	R <sub>f</sub>	R <sub>g</sub>	R <sub>1</sub>	R <sub>2</sub>	R <sub>3</sub>	R <sub>4</sub>	R <sub>5</sub>	R <sub>6</sub>	R <sub>7</sub>	R <sub>8</sub>	R <sub>9</sub>	R <sub>10</sub>	R <sub>11</sub>	R <sub>12</sub>	R <sub>13</sub>	R <sub>14</sub>	R <sub>15</sub>
2700K	95	103	97	99	94	94	97	98	97	98	99	97	91	98	98	95	98
3000K	95	104	98	99	93	94	97	98	96	96	97	96	92	95	98	95	97
3500K	95	98	98	98	97	98	98	98	98	97	93	97	97	95	98	97	98
4000K	97	100	99	99	97	99	99	99	99	98	94	97	99	96	99	98	98
5000K	97	100	98	99	98	98	98	98	99	98	95	98	98	98	98	98	97
5700K	94	98	98	98	97	95	98	97	96	95	92	97	96	96	98	98	97
6500K	95	98	98	98	97	96	98	98	96	96	93	97	96	97	98	98	97

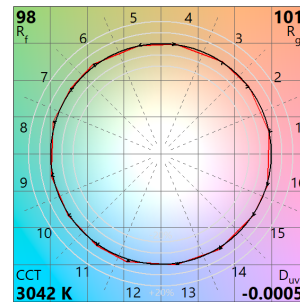
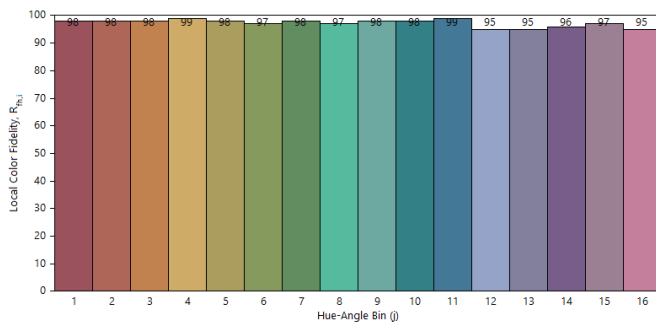
Note for Table 5:

1. Bridgelux maintains a tolerance of  $\pm 3$  on Color Rendering Index R1-R15 measurements and TM-30 measurements.
2. The data shown in the table above is for reference only. Specific values from R1 to R15 will vary for each production run.

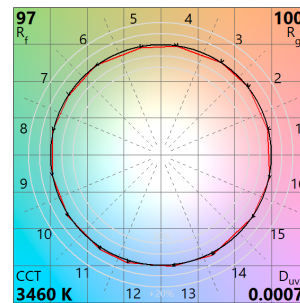
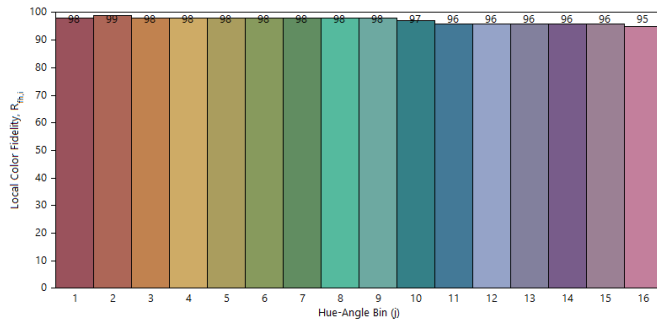
**Figure 1: 2700K Thrive TM-30 Graphs**



**Figure 2: 3000K Thrive TM-30 Graphs**



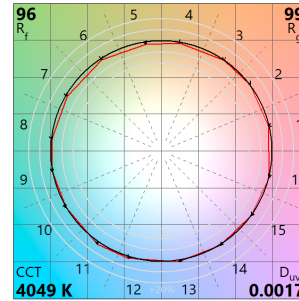
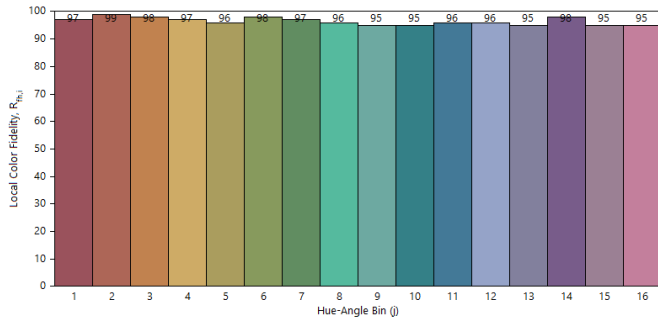
**Figure 3: 3500K Thrive TM-30 Graphs**



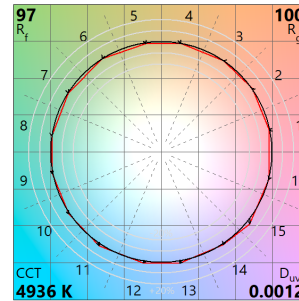
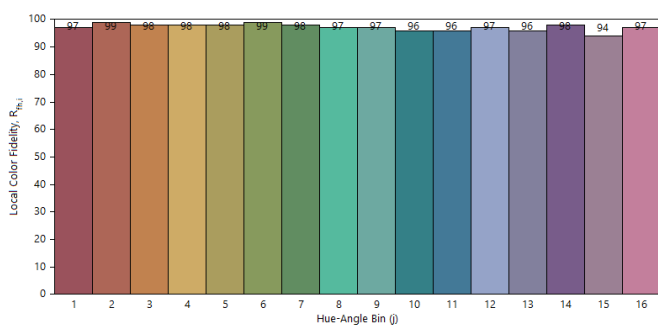


# Spectrum Characteristics

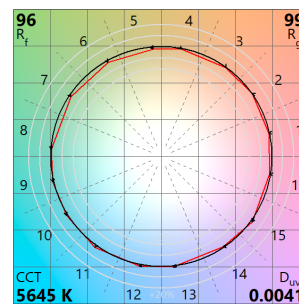
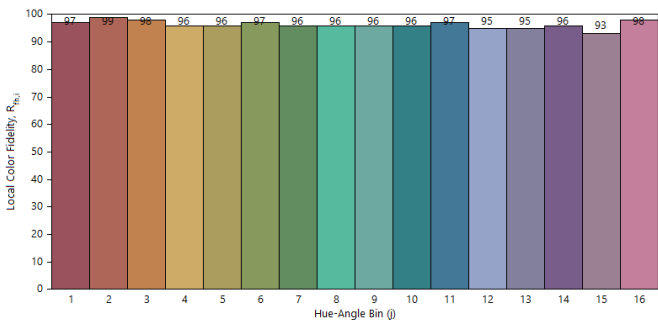
**Figure 4: 4000K Thrive TM-30 Graphs**



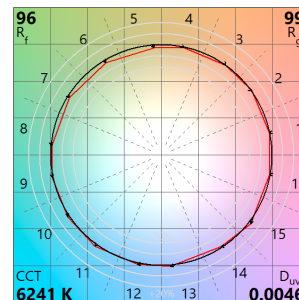
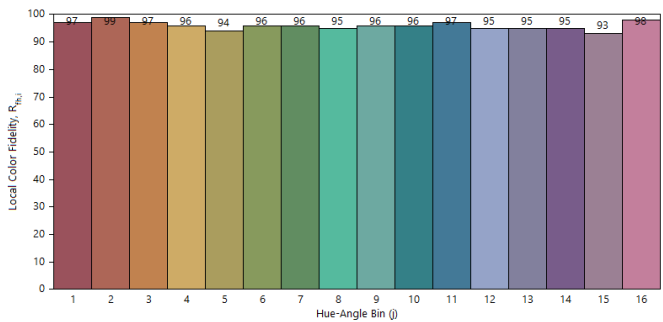
**Figure 5: 5000K Thrive TM-30 Graphs**



**Figure 6: 5700K Thrive TM30 Graphs**

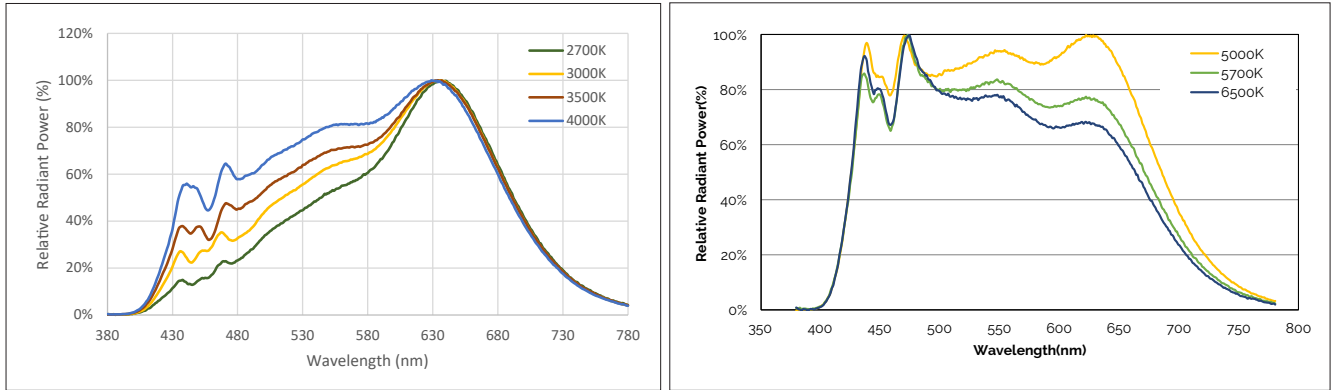


**Figure 7: 6500K Thrive TM-30 Graphs**



# Spectrum Characteristics

**Figure 8: Typical Color Spectrum**



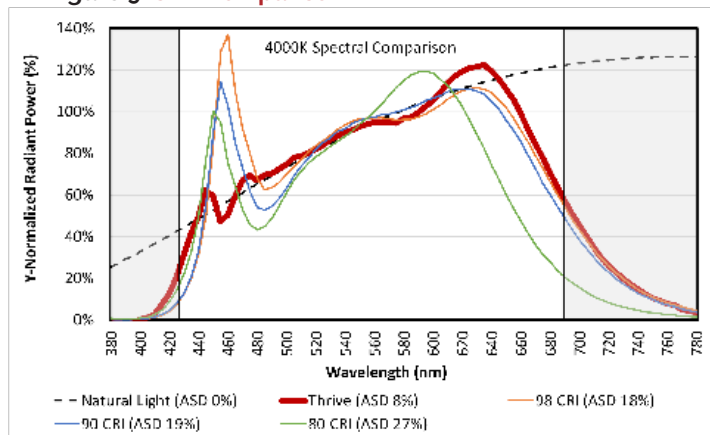
Note for Figure 8:

1. Color spectra measured at nominal current for  $T_j = 85^\circ\text{C}$ .

**Table 6: Typical ASD Values at  $T_c = 85^\circ\text{C}$ .**

Nominal CCT <sup>1</sup>	ASD
2700K	10%
3000K	9%
3500K	8%
4000K	8%
5000K	9%
5700K	9%
6500K	8%

**Figure 9: SPD Comparison**



## Spectral Matching to Natural Light

The lighting market is in the early stages of adoption of human-centric lighting (HCL). HCL encompasses the effects of lighting on the physical and emotional health and well-being of people. Throughout evolution, the human visual system has evolved under the natural light of sun and fire. These light sources have standardized industry spectral power definitions that describe the state of natural light. However, conventional metrics such as CCT, CRI, and TM-30 fail to adequately quantify the naturalness, or closeness of these light sources to the standardized natural spectra. Due to a lack of an industry standard metric to quantitatively measure the naturalness of a light source, Bridgelux has pioneered a new metric that takes the guesswork out of comparing LED light sources to natural light.

Average Spectral Difference, or ASD, is calculated by measuring the absolute difference between two spectra at discrete wavelengths. These values are averaged across a wavelength range derived from the photopic response curve, or  $V(\lambda)$ ; a luminous efficiency function describing the average spectral sensitivity of human perception of brightness. The range of 425nm to 690nm was selected to remove the tails of the  $V(\lambda)$  gaussian distribution below 1% of the peak value at 555nm, covering 99.9% of the area under the photopic response curve. Natural light is defined following the approach of IES TM-30; black body curves for light sources of  $\leq 4000\text{K}$  and the CIE standard illuminant D for light sources of  $\geq 5000\text{K}$ .

Natural light has an ASD of 0%; lower ASD values indicate a closer match to natural light. Thrive is engineered to provide the closest match to natural light available using proprietary chip, phosphor and packaging technology, resulting in an ASD between 8% to 10% for all CCTs. By comparison, standard 80, 90, and 98 CRI light sources have ASD values that are 100% to 300% larger than Thrive. To learn more about the ASD metric, please contact your Bridgelux sales representative.

# Electrical Characteristics

**Table 7:** Electrical Characteristics

Part Number	Drive Current (mA)	Forward Voltage Pulsed, $T_c = 25^\circ\text{C}$ (V) <sup>1, 2, 3, 8</sup>			Typical Coefficient of Forward Voltage <sup>4</sup> $\Delta V_f / \Delta T_c$ (mV/ $^\circ\text{C}$ )	Typical Thermal Resistance Junction to Case <sup>5,6</sup> $R_{j-c}$ ( $^\circ\text{C}/\text{W}$ )	Driver Selection Voltages <sup>7</sup> (V)	
		Minimum	Typical	Maximum			$V_f$ Min. Hot $T_c = 105^\circ\text{C}$ (V)	$V_f$ Max. Cold $T_c = -40^\circ\text{C}$ (V)
BXRE-xxx4001-C-7x	1170	32.2	34.4	37.4	-14.5	0.11	31.1	38.4
	2340	34.2	36.6	39.8	-14.5	0.13	33.5	41.2

Notes for Table 7:

- Parts are tested in pulsed conditions.  $T_c = 25^\circ\text{C}$ . Pulse width is 10ms.
- Voltage minimum and maximum are provided for reference only and are not a guarantee of performance.
- Bridgelux maintains a tester tolerance of  $\pm 0.10\text{V}$  on forward voltage measurements.
- Typical coefficient of forward voltage tolerance is  $\pm 0.1\text{mV}$  for nominal current.
- Thermal resistance values are based from test data of a 3000K 80 CRI product.
- Thermal resistance value was calculated using total electrical input power; optical power was not subtracted from input power. The thermal interface material used during testing is not included in the thermal resistance value.
- $V_f$  min hot and max cold values are provided as reference only and are not guaranteed by test. These values are provided to aid in driver design and selection over the operating range of the product.
- This product has been designed and manufactured per IEC 62031:2018. This product has passed dielectric withstand voltage testing at 1160 V. The working voltage designated for the insulation is 80V d.c. The maximum allowable voltage across the array must be determined in the end product application.

# Absolute Maximum Ratings

**Table 8:** Maximum Ratings

Parameter	Maximum Rating
LED Junction Temperature ( $T_j$ )	150°C
Storage Temperature	-40°C to +105°C
Operating Case Temperature <sup>1</sup> ( $T_c$ )	105°C
Soldering Temperature <sup>2</sup>	300°C or lower for a maximum of 6 seconds
Maximum Drive Current <sup>3</sup>	2340mA
Maximum Peak Pulsed Drive Current <sup>4</sup>	3340mA
Maximum Reverse Voltage <sup>5</sup>	-60V

Notes for Table 8:

1. For IEC 62717 requirement, please consult your Bridgelux sales representative.
2. Refer to Bridgelux Application Note AN101: Handling and Assembly of Bridgelux V Series LED Arrays.
3. Arrays may be driven at higher currents however lumen maintenance may be reduced.
4. Bridgelux recommends a maximum duty cycle of 10% and pulse width of 20 ms when operating LED Arrays at maximum peak pulsed current specified. Maximum peak pulsed currents indicate values where LED Arrays can be driven without catastrophic failures.
5. Light emitting diodes are not designed to be driven in reverse voltage and will not produce light under this condition. Maximum rating provided for reference only.

# Eye Safety

**Table 9:** Eye Safety Risk Group (RG) Classifications

Part Number	Drive Current <sup>4</sup> (mA)	CCT <sup>1,4</sup>			
		2700K/3000K	4000K	5000K <sup>2</sup>	6500K <sup>3</sup>
BXRE-xxx4001-C-7x	1170	RG1	RG1	RG1	RG1
	1755	RG1	RG1	RG2	RG2
	2340	RG1	RG1	RG2	RG2

Notes for Table 9:

1. Eye safety classification for the use of Bridgelux V Series LED arrays is in accordance with specification IEC/TR 62778: Application of IEC 62471 for the assessment of blue light hazard to light sources and luminaires.
2. For products classified as RG2 at 5000K  $E_{thr} = 1315.8$  lx.
3. For products classified as RG2 at 6500K,  $E_{thr} = 1124.5$  lx.
4. Please contact your Bridgelux sales representative for  $E_{thr}$  values at specific drive currents and CCTs not listed.

# Product Bin Definitions

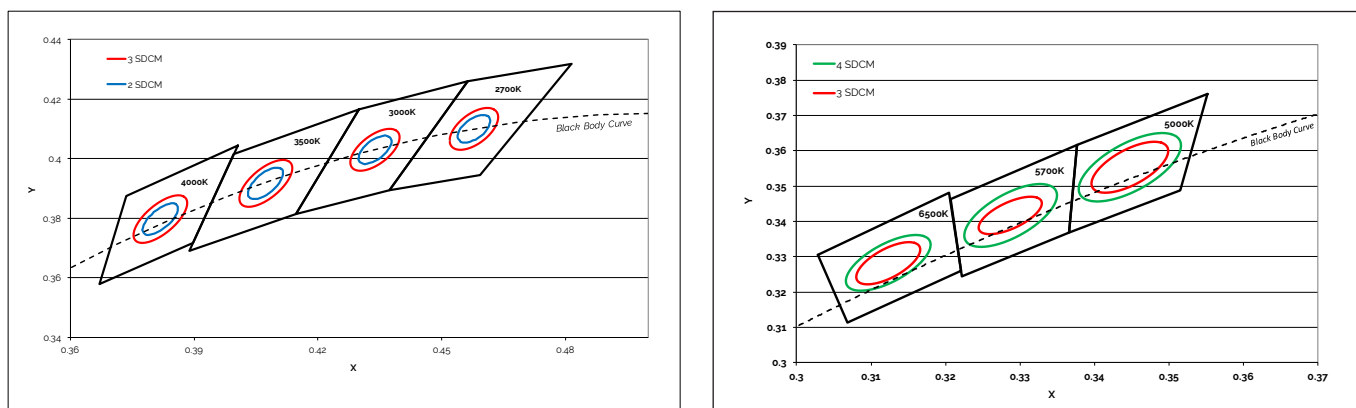
**Table 10:** 2-, 3- and 4-step MacAdam Ellipse Color Bin Definitions

CCT	Center Point		Degree	2-step		3-step		4-step	
	x	y	(°)	a	b	a	b	a	b
2700K	0.4578	0.4101	53.700	0.00540	0.00280	0.0081	0.0042	N/A	N/A
3000K	0.4338	0.403	53.217	0.00556	0.00272	0.0083	0.0041	N/A	N/A
4000K	0.3818	0.3797	53.717	0.00626	0.00268	0.0094	0.0040	N/A	N/A
5000K	0.3447	0.3553	59.617	N/A	N/A	0.0082	0.0035	0.0110	0.0047
5700K	0.3287	0.3417	59.060	N/A	N/A	0.0074	0.0032	0.0099	0.0042
6500K	0.3123	0.3282	58.567	N/A	N/A	0.0066	0.0028	0.0090	0.0038

Notes for Table 10:

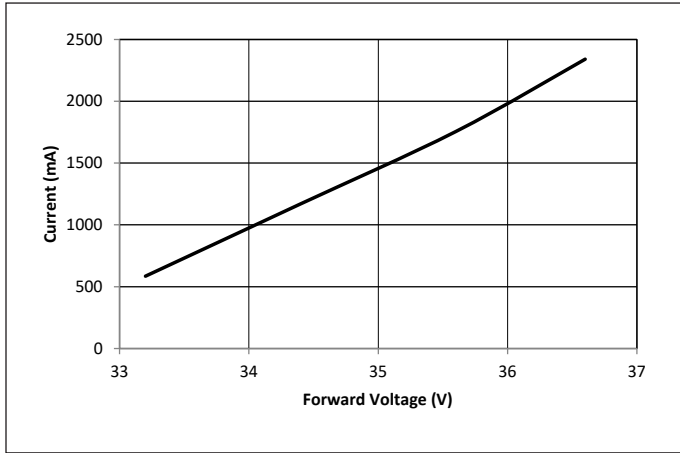
1. Color binning at  $T_c = 85^\circ\text{C}$
2. Bridgelux maintains a tolerance of  $\pm 0.007$  on x and y color coordinates in the CIE 1931 color space.

**Figure 10: C.I.E. 1931 Chromaticity Diagram (Color targeted at  $T_c = 85^\circ\text{C}$ )**

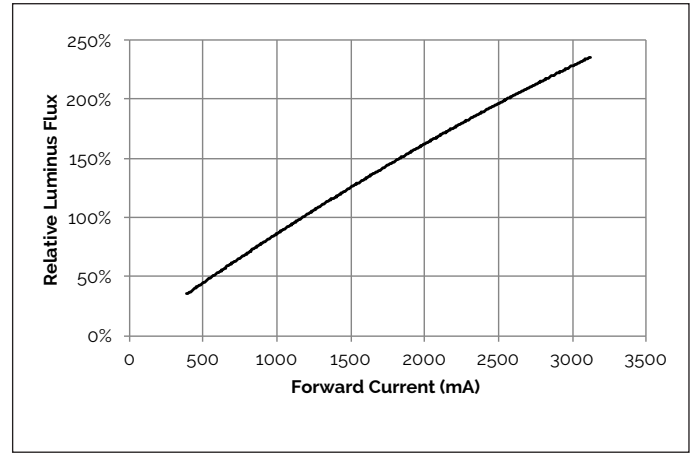


# Performance Curves

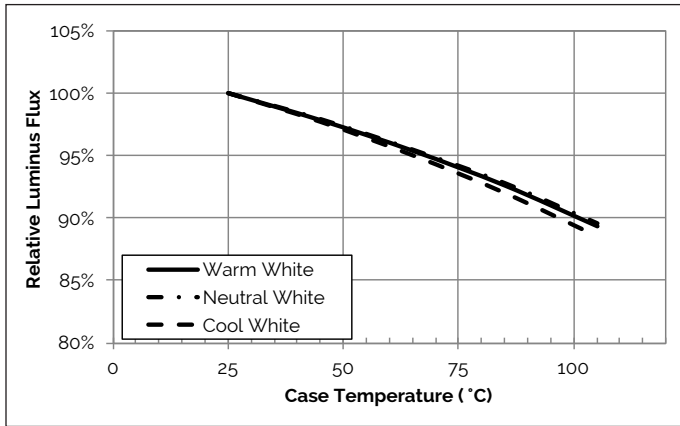
**Figure 11: V18C Drive Current vs. Voltage ( $T_c = 25^\circ\text{C}$ )**



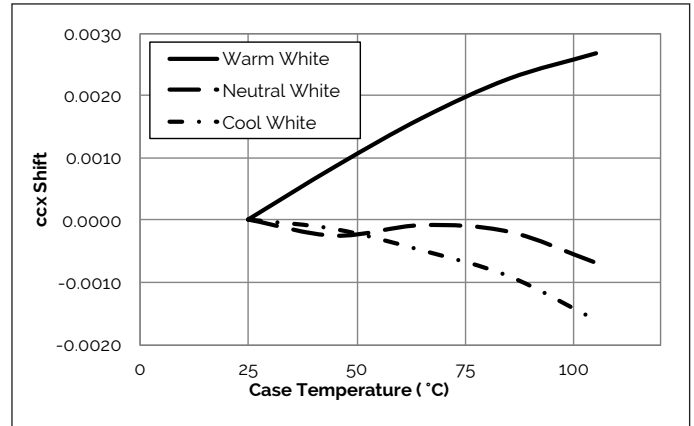
**Figure 12: V18C Typical Relative Flux vs. Current ( $T_c = 25^\circ\text{C}$ )**



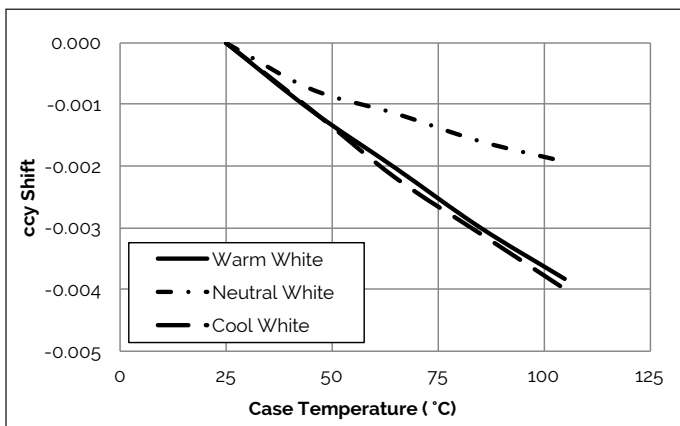
**Figure 13: Typical DC Flux vs. Case Temperature**



**Figure 14: Typical ccx Shift vs. Case Temperature**



**Figure 15: Typical ccy Shift vs. Case Temperature**

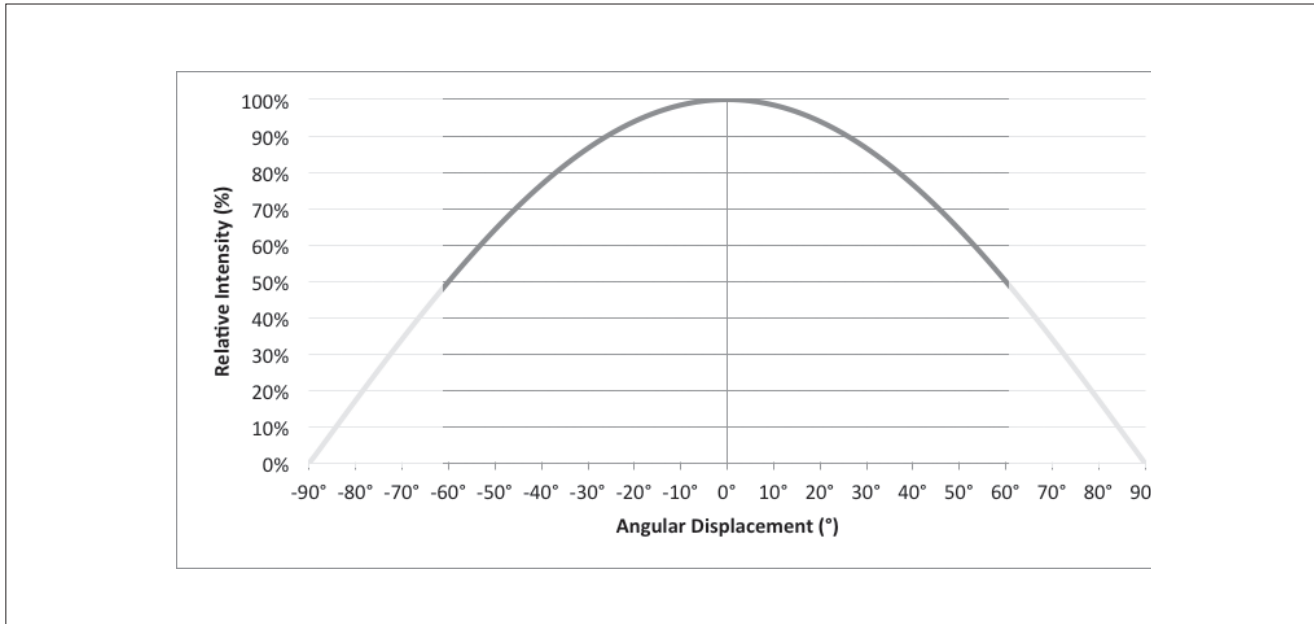


Notes for Figures 13-15:

1. Bridgelux does not recommend driving high power LEDs at low currents. Doing so may produce unpredictable results. Pulse width modulation (PWM) is recommended for dimming effects.
2. Characteristics shown for warm white based on 3000K Thrive
3. Characteristics shown for neutral white based on 4000K Thrive
4. Characteristics shown for cool white based on 5700K Thrive
5. For other color SKUs, the shift in color will vary. Please contact your Bridgelux Sales Representative for more information.

# Typical Radiation Pattern

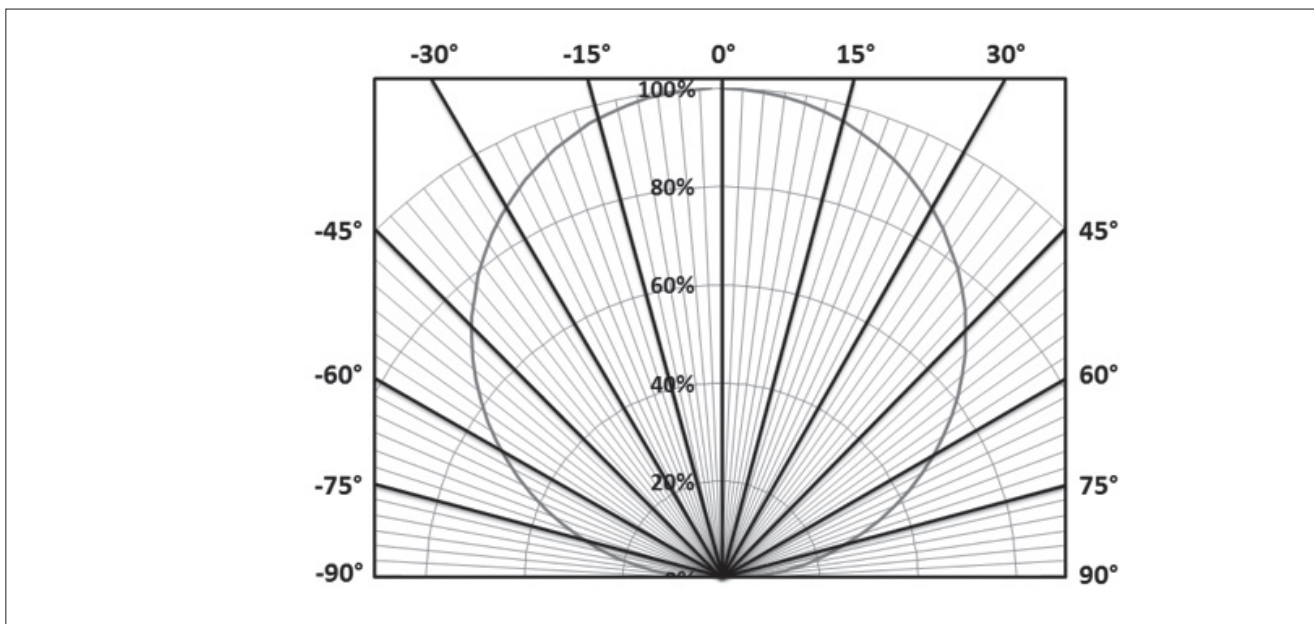
**Figure 16: Typical Spatial Radiation Pattern**



Notes for Figure 16:

1. Typical viewing angle is 120°.
2. The viewing angle is defined as the off axis angle from the centerline where intensity is ½ of the peak value.

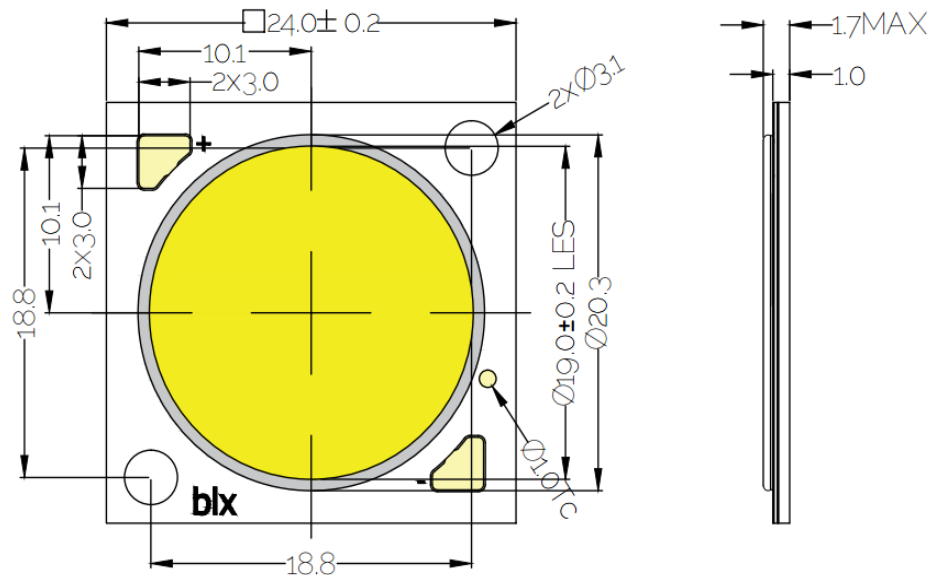
**Figure 17: Typical Polar Radiation Pattern**





# Mechanical Dimensions

Figure 18: V18C LED Array



Notes for Figure 18:

1. Drawings are not to scale.
2. Drawing dimensions are in millimeters.
3. Unless otherwise specified, tolerances are  $\pm 0.1$ mm.
4. Mounting locations (2X) are for M2.5 screws.
5. Screws with flat shoulders (pan, dome, button, round, truss, mushroom) provide optimal torque control. Do NOT use flat, countersink, or raised head screws.
6. The optical center of the LED Array is nominally defined by the mechanical center of the array to a tolerance of  $\pm 0.2$ mm.
7. Bridgelux maintains a flatness of 0.10mm across the mounting surface of the array.

# Packaging and Labeling

Figure 19: V18C Packaging



Notes for Figure 19:

1. Each tube holds 20 V18 COB arrays.
2. One tube is sealed in an anti-static bag. Four bags are placed in a shipping box. Depending on quantities ordered, a bigger shipping box, containing four boxes may be used to ship products.
3. Each bag and box is to be labeled as shown above.
4. Dimensions for each tube are 8.3 (W) x 15.4 (H) x 430 (L). Dimensions for the anti-static bag are 75 (W) x 615 (L) x 3.1 (T) mm. Dimensions for the shipping box are 58.7 x 13.3 x 7.9 cm

# Packaging and Labeling

**Figure 20: Gen. 7 Product Labeling**

Bridgelux COB arrays have laser markings on the back side of the substrate to help with product identification. In addition to the product identification markings, Bridgelux COB arrays also contain markings for internal Bridgelux manufacturing use only. The image below shows which markings are for customer use and which ones are for Bridgelux internal use only. The Bridgelux internal manufacturing markings are subject to change without notice, however these will not impact the form, function or performance of the COB array.



# Design Resources

## Application Notes

Bridgelux has developed a comprehensive set of application notes and design resources to assist customers in successfully designing with the V Series product family of LED array products. For all available application notes visit [www.bridgelux.com](http://www.bridgelux.com).

## Optical Source Models

Optical source models and ray set files are available for all Bridgelux products. For a list of available formats, visit [www.bridgelux.com](http://www.bridgelux.com).

## 3D CAD Models

Three dimensional CAD models depicting the product outline of all Bridgelux V Series LED arrays are available in both IGS and STEP formats. Please contact your Bridgelux sales representative for assistance.

## LM80

LM80 testing has been completed and the LM80 report is now available. Please contact your Bridgelux sales representative for LM-80 report.

# Precautions

## CAUTION: CHEMICAL EXPOSURE HAZARD

Exposure to some chemicals commonly used in luminaire manufacturing and assembly can cause damage to the LED array. Please consult Bridgelux Application Note AN101 for additional information.

## CAUTION: RISK OF BURN

Do not touch the V Series LED array during operation. Allow the array to cool for a sufficient period of time before handling. The V Series LED array may reach elevated temperatures such that could burn skin when touched.

## CAUTION

### CONTACT WITH LIGHT EMITTING SURFACE (LES)

Avoid any contact with the LES. Do not touch the LES of the LED array or apply stress to the LES (yellow phosphor resin area). Contact may cause damage to the LED array.

Optics and reflectors must not be mounted in contact with the LES (yellow phosphor resin area).

# Disclaimers

## MINOR PRODUCT CHANGE POLICY

The rigorous qualification testing on products offered by Bridgelux provides performance assurance. Slight cosmetic changes that do not affect form, fit, or function may occur as Bridgelux continues product optimization.

## STANDARD TEST CONDITIONS

Unless otherwise stated, array testing is performed at the nominal drive current.

# About Bridgelux: Bridging Light and Life™

At Bridgelux, we help companies, industries and people experience the power and possibility of light. Since 2002, we've designed LED solutions that are high performing, energy efficient, cost effective and easy to integrate. Our focus is on light's impact on human behavior, delivering products that create better environments, experiences and returns—both experiential and financial. And our patented technology drives new platforms for commercial and industrial luminaires.

**For more information about the company, please visit**

**[bridgelux.com](http://bridgelux.com)**

**[twitter.com/Bridgelux](https://twitter.com/Bridgelux)**

**[facebook.com/Bridgelux](https://facebook.com/Bridgelux)**

**[linkedin.com/company/bridgelux-inc-\\_2](https://linkedin.com/company/bridgelux-inc-_2)**

**[youtube.com/user/Bridgelux](https://youtube.com/user/Bridgelux)**

**WeChat ID: BridgeluxInChina**



46410 Fremont Boulevard

Fremont, CA 94538 USA

Tel (925) 583-8400

**[www.bridgelux.com](http://www.bridgelux.com)**