

85V 140A N-Channel Enhancement Mode Power MOSFET

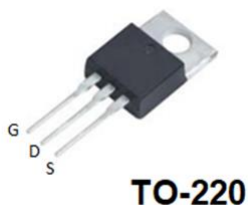
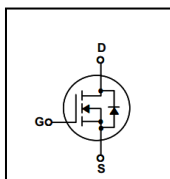
General Description

This Power MOSFET has been developed using advanced SGT process, which is specifically designed to minimize input capacitance and gate charge. This device is ideal for high-efficiency switching and synchronous rectification.

FEATURES

- $R_{DS(ON)} \leq 4.9m\Omega$ @ $V_{GS}=10V$, $I_D=50A$
- Excellent $R_{DS(ON)}$ and Low Gate Charge
- Lead free product is acquired

SYMBOL



TO-220

ASSEMBLY MESSAGE

Product Name	Marking	Package	Packaging
BXS049N08P	BX049N08P	TO-220	Tube

ABSOLUTE MAXIMUM RATINGS ($T_C=25^\circ C$ unless otherwise noted)

Parameter		Symbol	Rating	Unit
			TO-220	
Drain-Source Voltage		V_{DS}	85	V
Drain Current	Continuous ($T_C = 25^\circ C$)	I_D	140	A
	Continuous ($T_C = 100^\circ C$)		79	A
Drain Current	Pulsed (Note1)	I_{DM}	560	A
Gate-Source Voltage		V_{GS}	± 20	V
Power Dissipation	$T_C = 25^\circ C$	P_D	189	W
Avalanche Energy	Single Pulse	E_{AS}	190	mJ
Maximum Junction Temperature		T_J	150	$^\circ C$
Storage Temperature Range		T_{STG}	-55 to 150	$^\circ C$

Note: 1. Repetitive Rating: Pulse width limited by maximum junction temperature

THERMAL CHARACTERISTICS

Parameter	Symbol	Max.	Unit
		TO-220	
Thermal Resistance, Junction-to-Case	$R_{\theta JC}$	0.66	$^{\circ}\text{C} / \text{W}$

ELECTRICAL CHARACTERISTICS ($T_J=25^{\circ}\text{C}$, unless otherwise Noted)

Parameter	Symbol	Test Condition	Min.	Typ.	Max.	Unit
OFF CHARACTERISTICS						
Drain-Source Breakdown Voltage	BV _{DSS}	VGS=0V, ID=250μA	85	96		V
Zero Gate Voltage Drain Current	I _{DSS}	VDS=85V, VGS=0V			1	μA
Gate-Body Leakage Current, Forward	I _{GSS}	VGS=20V			100	nA
Gate-Body Leakage Current, Reverse		VGS=-20V			-100	nA
ON CHARACTERISTICS						
Gate Threshold Voltage	V _{GS(TH)}	VDS=VGS, ID=250μA	2	3	4	V
Drain-Source On-State Resistance	R _{DS(ON)}	VGS=10V, ID=5A		3.8	4.9	mΩ
		VGS=10V, ID=50A		4	4.9	mΩ
DYNAMIC PARAMETERS						
Input Capacitance	C _{ISS}	VDS=40V, VGS=0V, f=1.0MHz	-	4021	-	pF
Output Capacitance	C _{OSS}		-	510	-	pF
Reverse Transfer Capacitance	C _{RSS}		-	28	-	pF
SWITCHING PARAMETERS						
Turn-ON Delay Time	t _{D(ON)}	VDD=40V, ID=60A, VGS = 10V, RG=1Ω	-	20	-	ns
Turn-ON Rise Time	t _R		-	60	-	ns
Turn-OFF Delay Time	t _{D(OFF)}		-	39	-	ns
Turn-OFF Fall-Time	t _F		-	11	-	ns
Total Gate Charge(Note2)	Q _G	VDS =40V, VGS =10V, ID =60A	-	72	-	nC
Gate Source Charge	Q _{GS}		-	22	-	nC
Gate Drain Charge	Q _{GD}		-	23	-	nC
SOURCE- DRAIN DIODE RATINGS AND CHARACTERISTICS						
Drain-Source Diode Forward Voltage	V _{SD}	IS=50A, VGS=0V	-		1.2	V
Diode Continuous Forward Current	I _S		-		140	A
Reverse Recovery Time	t _{RR}	VGS = 0 V, I _F = I _S	-	65	-	nS
Reverse Recovery Charge	Q _{RR}	di/dt=100 A/μs (Note4,5)	-	136	-	nC

Note: 2. Essentially independent of operating temperature-

TYPICAL CHARACTERISTICS

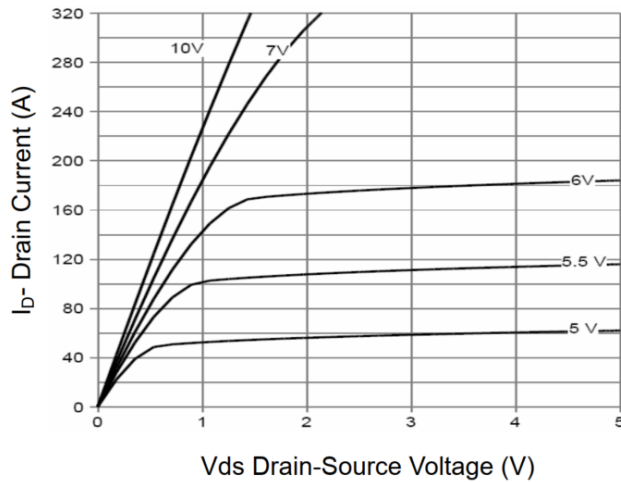


Figure 1 Output Characteristics

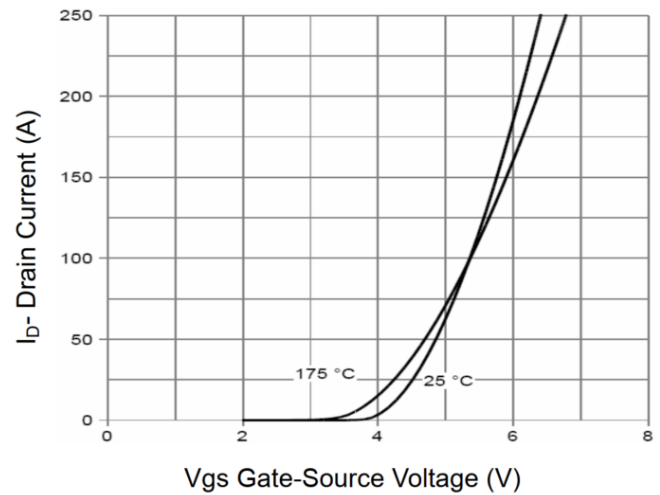


Figure 2 Transfer Characteristics

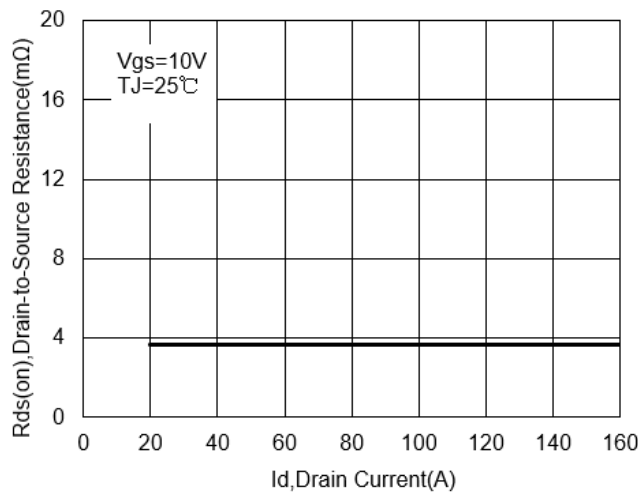


Figure 3. Rdson-Drain Current

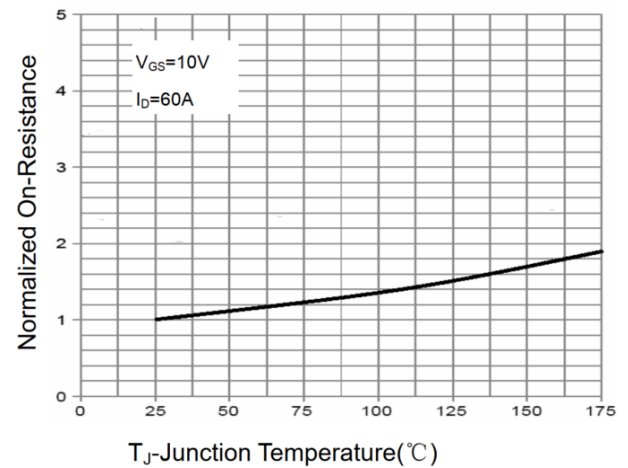


Figure 4 Rdson-Junction Temperature

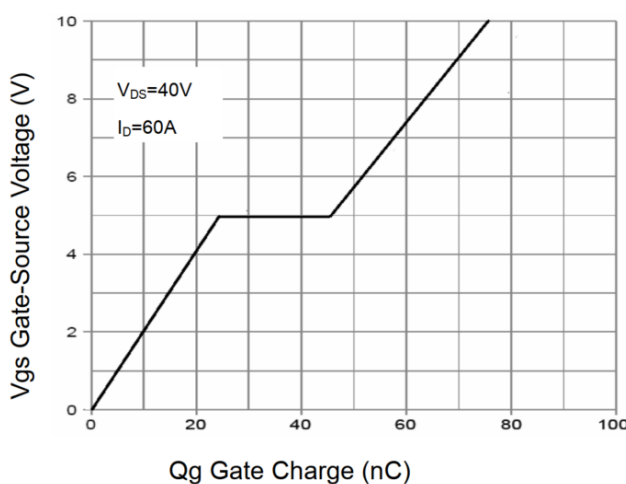


Figure 5 Gate Charge

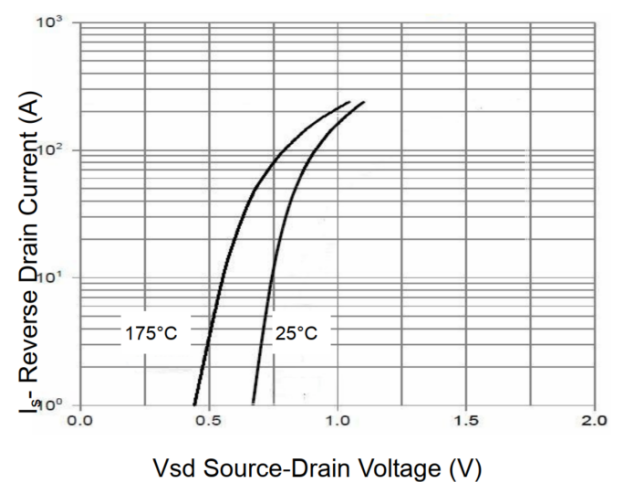


Figure 6 Source-Drain Diode Forward

TYPICAL CHARACTERISTICS(Cont.)

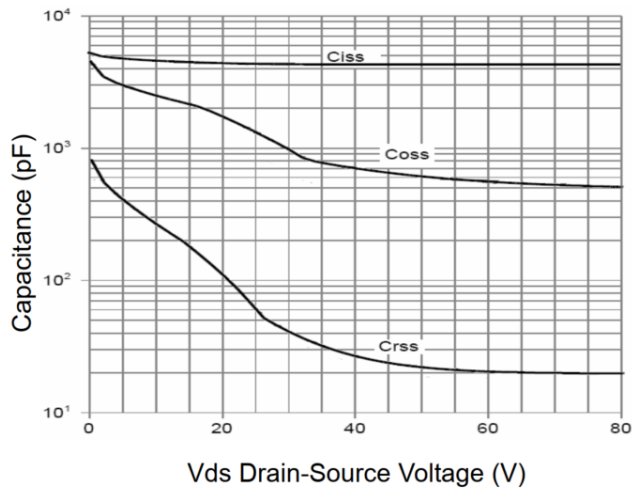


Figure 7 Capacitance vs Vds

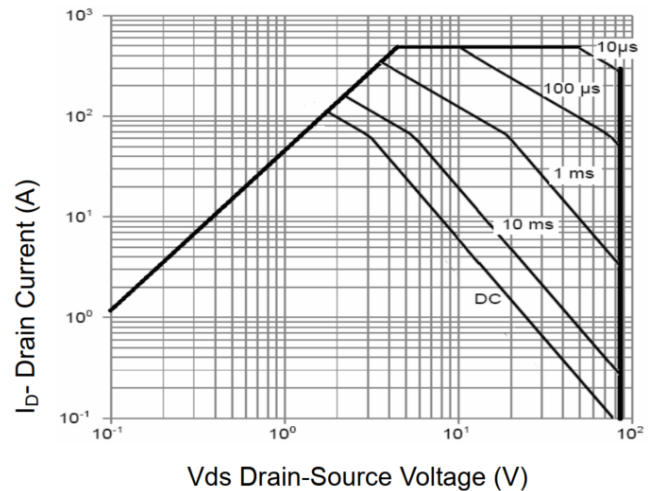


Figure 8 Safe Operation Area

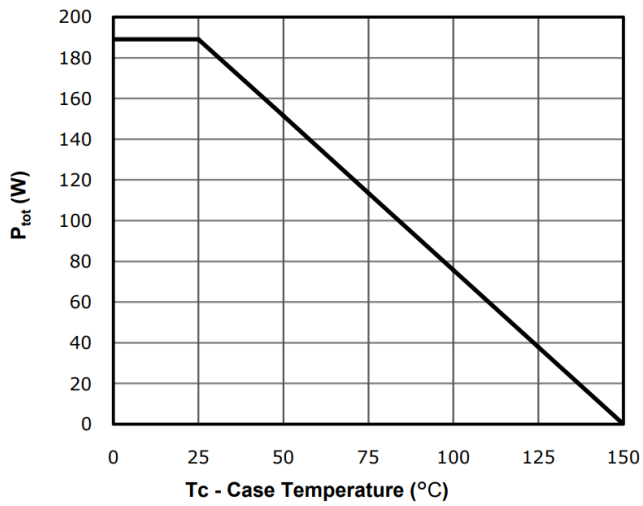
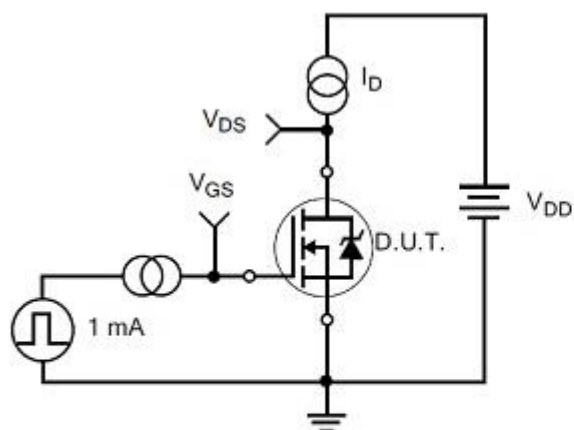
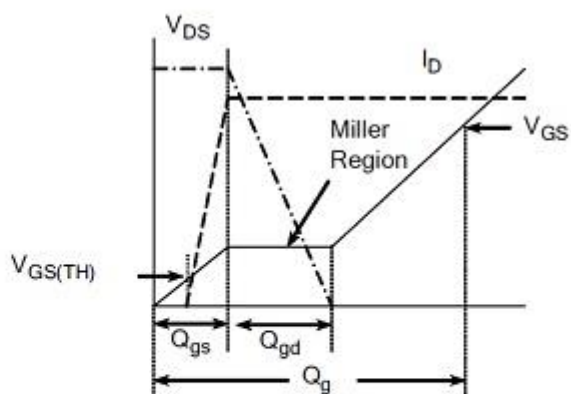


Figure 9 Power De-rating

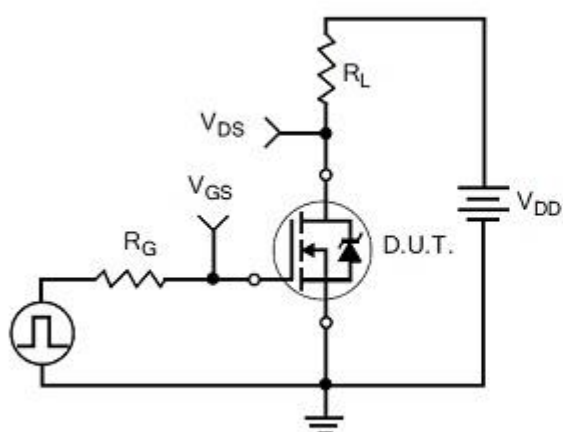
TEST CIRCUITS AND WAVEFORMS



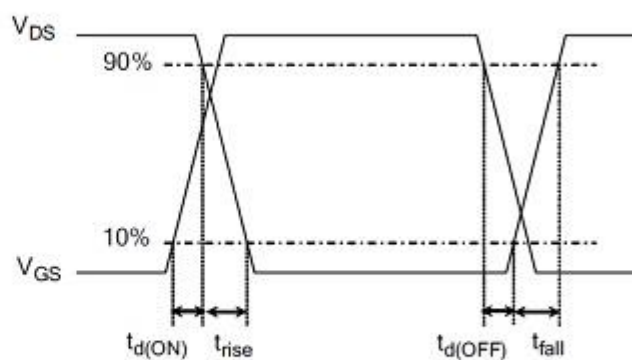
Gate Charge Test Circuit



Gate Charge Waveform

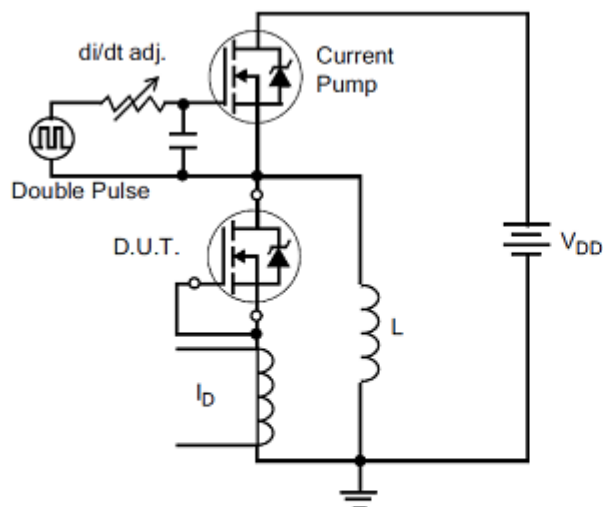


Resistive Switching Test Circuit

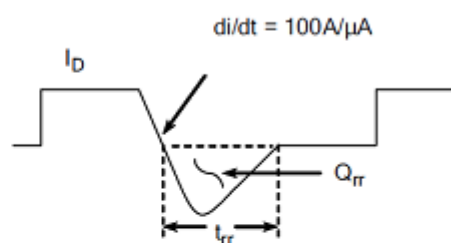


Resistive Switching Waveforms

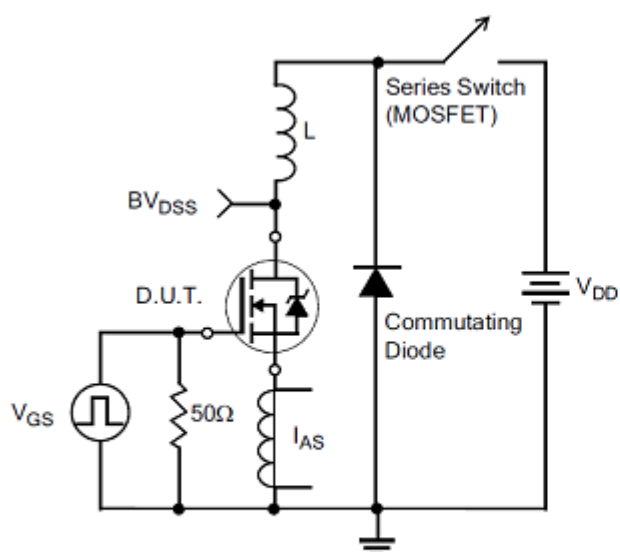
TEST CIRCUITS AND WAVEFORMS(Cont.)



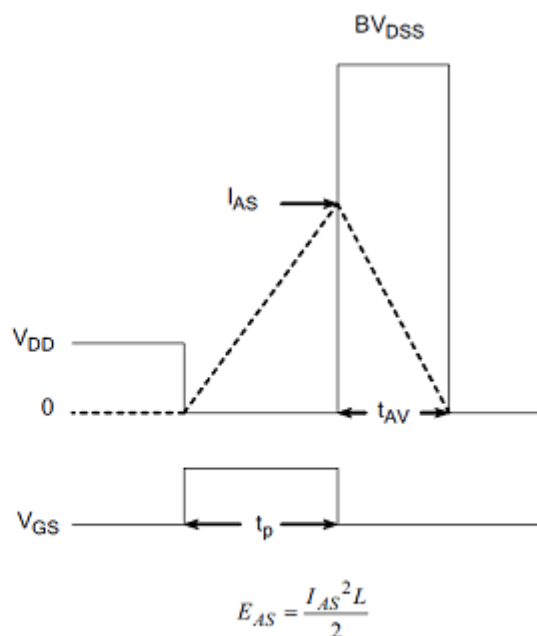
Diode Reverse Recovery Test Circuit



Diode Reverse Recovery Waveform

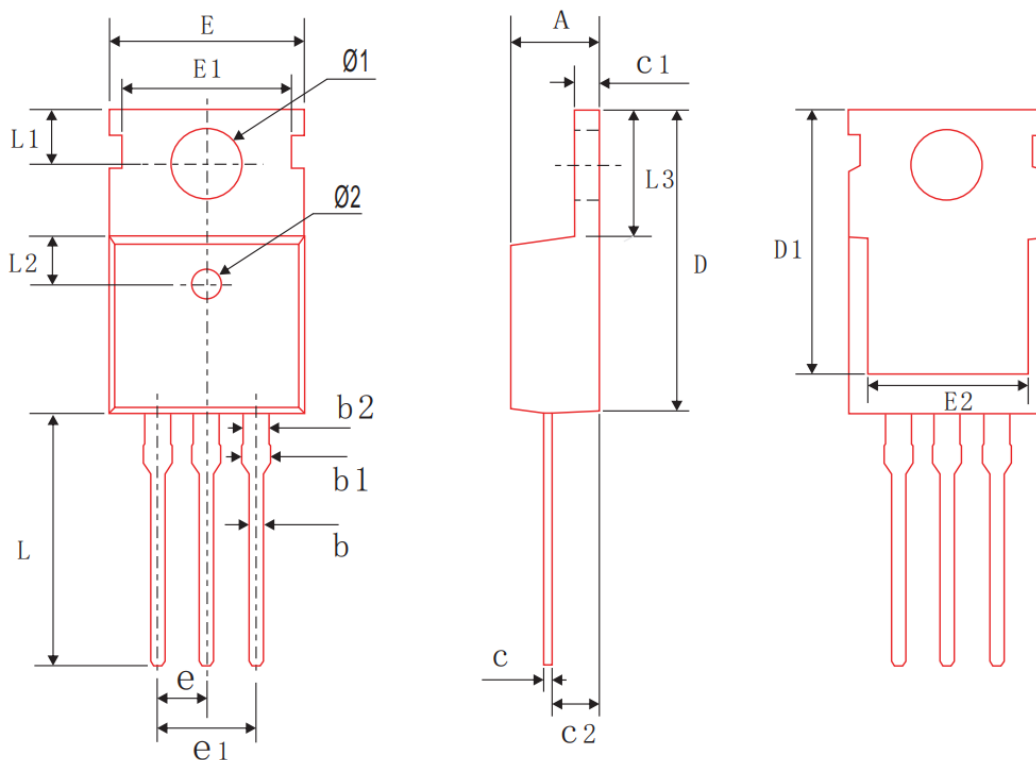


Unclamped Inductive Switching Test Circuit



Unclamped Inductive Switching Waveforms

TO-220 Package



COMMON DIMENSIONS
(UNITS OF MEASURE=mm)

SYMBOL	MIN	NOM	MAX
A	4.30	4.50	4.70
b	0.70	0.80	0.90
b 1	—	—	1.42
b 2	1.17	1.27	1.37
c	0.40	0.50	0.60
C 1	1.25	1.30	1.35
C 2	2.20	2.40	2.60
D	15.45	15.65	15.85
D 1	13.20	13.40	13.60
E	9.80	10.0	10.2
E 1	8.60	8.70	8.80
E 2	7.80	8.00	8.20
e 1	4.88	5.08	5.28
L	12.95	13.15	13.35
L 1	2.70	2.80	2.90
L 2	2.40	2.50	2.60
L 3	6.30	6.50	6.70
Ø1	3.50	3.60	3.70
Ø2	1.35	1.50	1.65
e	2.54BSC		

Revision history

Document revision history

Date	Revision	Changes
25-Oct-2020	1.0	First release

Disclaimers:

Bridgelux WuXi has made reasonable commercial efforts to ensure that the information given in this data sheet is correct. However, it must clearly be understood that such information is for guidance only and does not constitute any representation or form part of any offer or contract.

For documents and material available from this data sheet, Bridgelux WuXi does not warrant or assume any legal liability or responsibility for the accuracy, completeness, or usefulness of any information, product, technology or process disclosed hereunder.

Bridgelux WuXi reserves the rights to at its own discretion to make any changes or improvements to this data sheet. Unless said data sheet is incorporated into the formal contract, any customer should not rely on the information as any specification or product parameters duly committed by Bridgelux WuXi. Customers are hereby advised to verify that the information contained herein is current and complete before the entering of any contract or acknowledgement of any purchase order. Accordingly, all products specified hereunder shall be sold subject to Bridgelux WuXi's terms and conditions supplied at the time of order acknowledgement. Except where agreed upon by contractual agreement, testing of all parameters of each product is not necessarily performed.

Bridgelux WuXi does not warrant or convey any license either expressed or implied under its patent rights, nor the rights of others. Reproduction of information contained herein shall be only permissible if such reproduction is without any modification or alteration. Reproduction of this information with any alteration is an unfair and deceptive business practice. Bridgelux WuXi is not responsible or liable for such altered documentation.

Resale of Bridgelux WuXi's products with statements different from or beyond the parameters stated by Bridgelux WuXi for that product or service voids all express or implied warranties for the associated Bridgelux WuXi's product or service and is unfair and deceptive business practice. Bridgelux WuXi is not responsible or liable for any such statements.

Bridgelux WuXi's products are not authorized for use as critical components in life support devices or systems without the express written approval of Bridgelux WuXi. As used herein:

1. Life support devices or systems are devices or systems which, (a) are intended for surgical implant into the body, or (b) support or sustain life, and whose failure to perform, when properly used in accordance with instructions for use provided in the labeling, can be reasonably expected to result in a significant injury to the user.
2. A critical component is any component of a life support device or system whose failure to perform can be reasonably expected to cause the failure of the life support device or system, or to affect its safety or effectiveness.