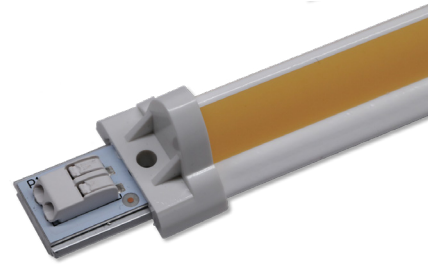


# IB Series™

## Product Differentiation

- Unique wide angle beam pattern enables excellent uniformity and fill, requiring fewer modules in a lighting system
- Remote phosphor system architecture eliminates pixilation
- Delivers clean and consistent white light under deep dimming conditions
- 98 CRI option with R<sub>g</sub> >95



## Features & Benefits

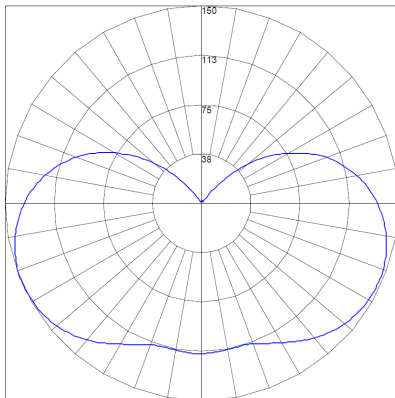
- Integrated plug & play module accelerates time to market
- Wide angle 240° FWHM batwing beam pattern
- Diffuse, uniform, glare-free lighting
- Impact resistant polycarbonate cover protects LEDs from damage
- 3 SDCM color consistency over length and over angle

## Applications

- Retail & Hospitality
- Office & Education
- Healthcare
- Architectural & Museums



## Intensity Distribution (240° beam angle)



CRI	CCT	Efficacy* (lm/W)	Typical Flux* (lm)				
			240 mm (9.5 in)	305 mm (12 in)	508 mm (20 in)	554 mm (21.8 in)	1092 mm (43 in)
80 min	3000K	137	805	1090	1920	2200	3000
	3500K	141	830	1120	2000	2250	3100
	4000K	145	865	1160	2070	2300	3160
	5000K	145	865	1160	2070	2300	3160
90 min	2700K	111	660	890	1570	1750	2450
	3000K	118	705	950	1680	1860	2580
	3500K	122	725	975	1720	1915	2660
	4000K	126	750	1000	1800	1990	2770
95 min	3000K	104	610	830	1490	1640	2260
	4000K	114	675	915	1620	1790	2495

\* All measurements are at T<sub>c</sub> = 40°C